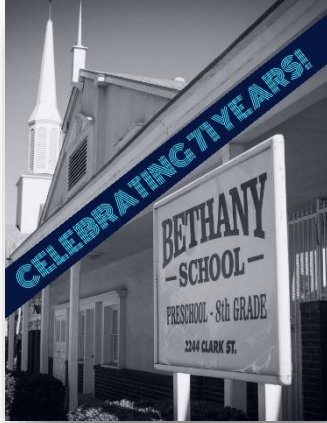




2244 Clark Avenue, Long Beach CA 90815 * (562) 597-2814 * www.bethany-school.org



OUR SCHOOL

Celebrating our 71st year, Bethany School continues to be a place where students can grow to BELIEVE * ACHIEVE * SUCCEED. Bethany is fully accredited by both ACSI and WASC (Association of Christian Schools International and Western Association of Schools and Colleges). Our high-performing school offers a well-rounded Christian education, in small classes totaling approximately 375 preschool – 8th grade students of diverse backgrounds and ethnicities. Our small school size provides us with a true sense of family, affording us the opportunity to provide not only quality academic instruction, but also to teach children and their families about God, His Word, His son Jesus Christ, and about the working of the Holy Spirit in our lives.

OUR VISION & MISSION

VISION: We desire to glorify God and see students transformed into well-educated disciples of Jesus, who BELIEVE, ACHIEVE and SUCCEED.

MISSION: Bethany School is a diverse Christ-centered community, where students (and families) will: **Connect** in relationship with God, the church, and others; **Grow spiritually**, understanding God's Word, and **Grow academically**, by understanding their part in the world He created; **Go** from here spiritually and academically transformed, ready to impact the world for Him

OUR PROGRAM

Bethany School believes that children need a well-rounded education that includes reading, writing, arithmetic, as well as history, science, PE, the arts, and most importantly, wisdom from the Word of God. In the context of small class sizes, Bethany uses a variety of current, standards-based curriculum, by both Christian and secular publishers, to provide a strong foundation for student achievement. In addition, students enjoy weekly chapel, daily Bible instruction, physical education, art, and music instruction, missionary service projects, and weekly

library time. In addition to a computer lab, all students have access to a new mobile iPads lab and Chrome Books for classroom technology integration, while 4th grade through middle school students have 1-1 access to Chrome Books in each classroom. Student learning is enhanced by multiple field trips each year for all students. In the upper grades, learning goes on the move with extended travel opportunities, including Sacramento (4th), Grand Canyon (5th), Catalina Science Camp (6th), Gleanings Mission Trip (7th), and a trip to the East Coast (8th). To round out our program, students enjoy a variety of afterschool clubs, music programs, sports, and daycare activities.

OUR STAFF

While curriculum is important, Bethany teachers are at the heart of our students' achievement. Our caring Christian teachers are highly qualified, credentialed, and take part in on-going cutting-edge professional development. Our staff is balanced between veteran teachers, with a wealth of experience, and newer teachers, with a host of fresh ideas. In addition, students benefit from adult instructional aides across the grade levels. Bethany teachers make use of technology both in the classroom and in the computer lab to enhance student learning, including ELMOS, laptops, LCD projectors, on-line grading and parent portal, classroom dojo, mobile iPad & Chrome Book labs, and more. Yet it all comes back to the quality of our teachers and the one-on-one connection they make with students through instruction, modeling, and discipleship. That's the Bethany difference.

OUR ACHIEVEMENT

Bethany School emphasizes a focus on Bible, literacy, and math, which is infused into our subject areas. Our standardized test scores are one indication of achievement. But another indication is our graduates, who continue to excel in many of the local accelerated high school programs, both public and private. There, Bethany graduates find continued academic success in addition to success in athletics, the arts, and leadership. A quality Christian education is a fundamental foundation for a life that is truly successful in the things that matter. In other words, Bethany students go on to... **BELIEVE* ACHIEVE * SUCCEED!**



BETHANY HAS DEVELOPED AN EXEMPLARY TECHNOLOGY PROGRAM THAT EQUIPS STUDENTS FOR 21ST CENTURY LEARNING. Major Commendation from WASC/ACSI Accreditation



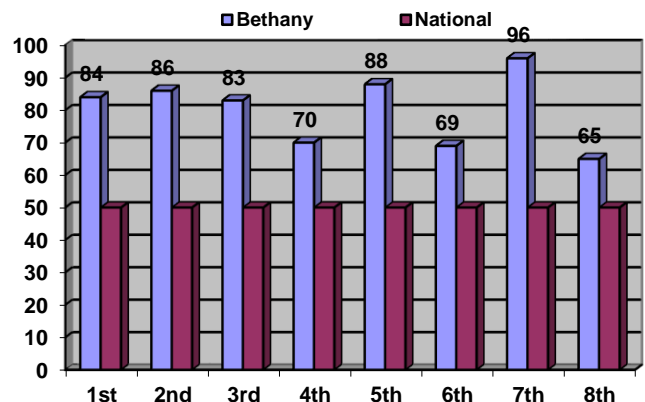
BethanySchool

a place to believe, achieve, and succeed.

Preschool, Elementary, Middle School
 2244 Clark Ave., Long Beach CA 90815
 562-597-2814 www.bethany-school.org
 Email: info@bethany-school.org

2018 TERRA NOVA TESTING BETHANY SCHOOL'S TOTAL SCORES COMPARED TO THE NATIONAL AVERAGE

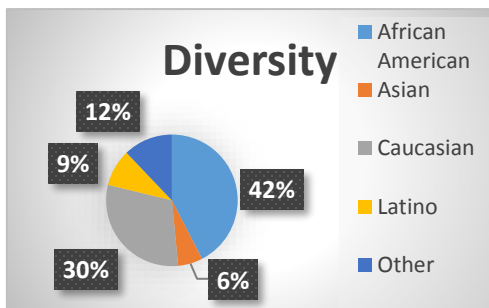
Bethany School uses the Terra Nova, 3rd Edition Standardized Test as one tool to monitor student achievement for grades 1st – 8th. Bethany continues to exceed the national average in all levels. In fact, our student averages exceed those of most of our local public and private schools, as well. The following are combined total Math & Language & Reading scores. Spring 2018



Bethany has 175 instructional days this year. We hold to a higher standard than California state law requires for instructional minutes and more than most public schools. We also offer a full day kindergarten program.

GRADES	STATE REQ'D	BETHANY
Kindergarten	36,000	55,125
Grades 1-3	50,400	55,125
Grades 4-5	54,000	55,125
Grades 6-8	55,125	61,285

Bethany maintains small class sizes, with a 20-1 ratios in K-3 and 26-1 in 4 – 8. Our student body represents our diverse city.



OUR STAFF

All of our faculty members are born-again Christians, active in their churches, and called into ministry.

Salary Ranges: \$32,319 - \$60,000
 Credentialed Teachers = 16
 Credentials in Progress = 1
 Average Years of Experience = 10 years

BUDGET EXPENDITURES

Bethany School tuition covers all operating expenses. Fundraising enhances our facilities.

Certified Salaries = 48% Services = 15%
 Hourly = 16% Supplies = 3%
 Benefits = 16% Equipment = 2%
 Curriculum and field trips paid for by tuition fees.
 *excluding 8th grade

SPRING SURVEY

Parent Satisfaction Survey show an 85-95% satisfaction of the Spiritual, Academic and Family atmosphere here at Bethany School. Check out the webpage for all results.



BELIEVE * ACHIEVE * SUCCEED